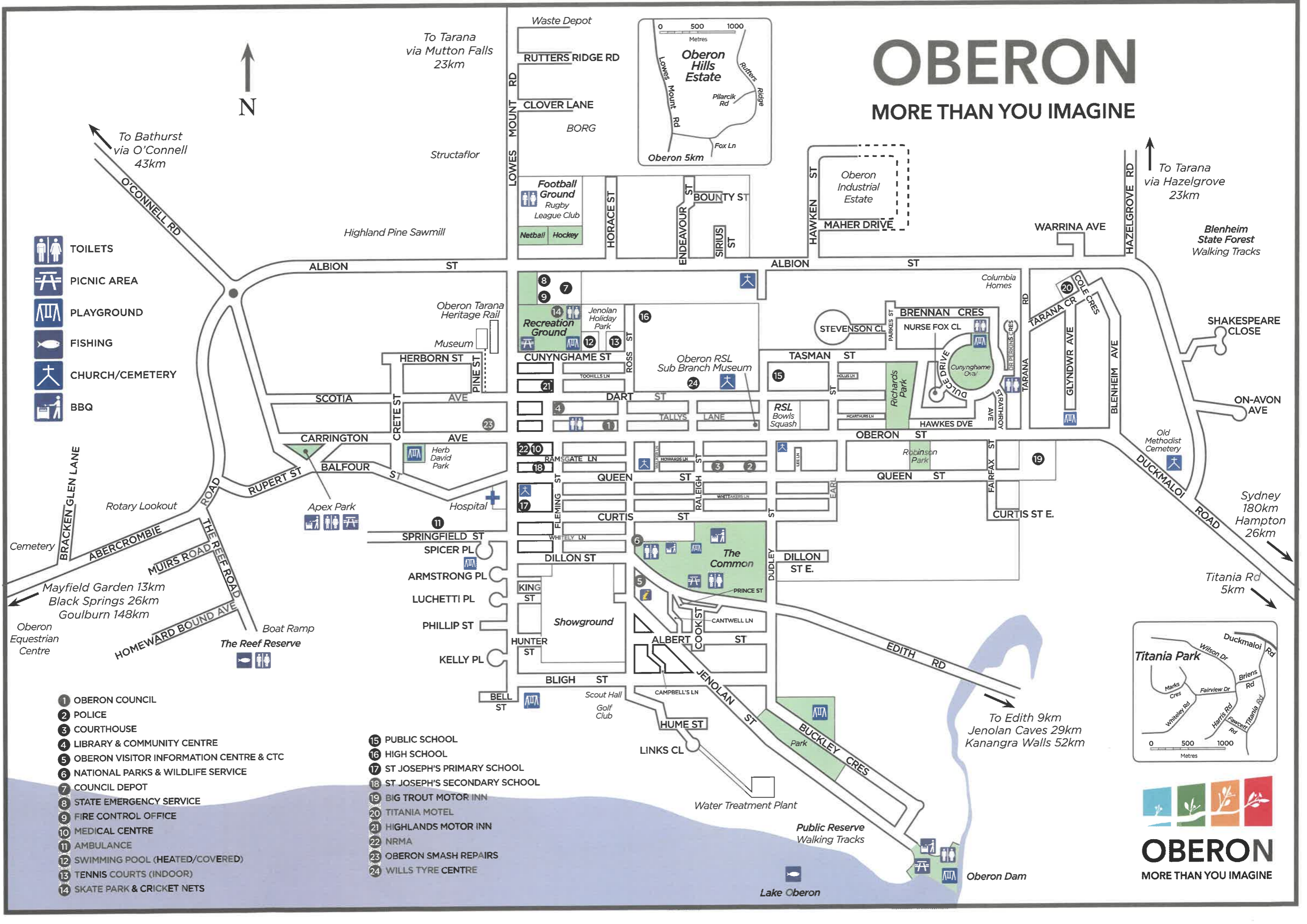


OBERON

MORE THAN YOU IMAGINE



To Tarana via Hazelgrove 23km

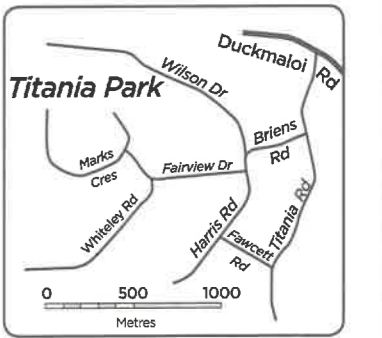
To Bathurst via O'Connell 43km

To Tarana via Mutton Falls 23km

Sydney 180km
Hampton 26km

Mayfield Garden 13km
Black Springs 26km
Goulburn 148km

To Edith 9km
Jenolan Caves 29km
Kanangra Walls 52km

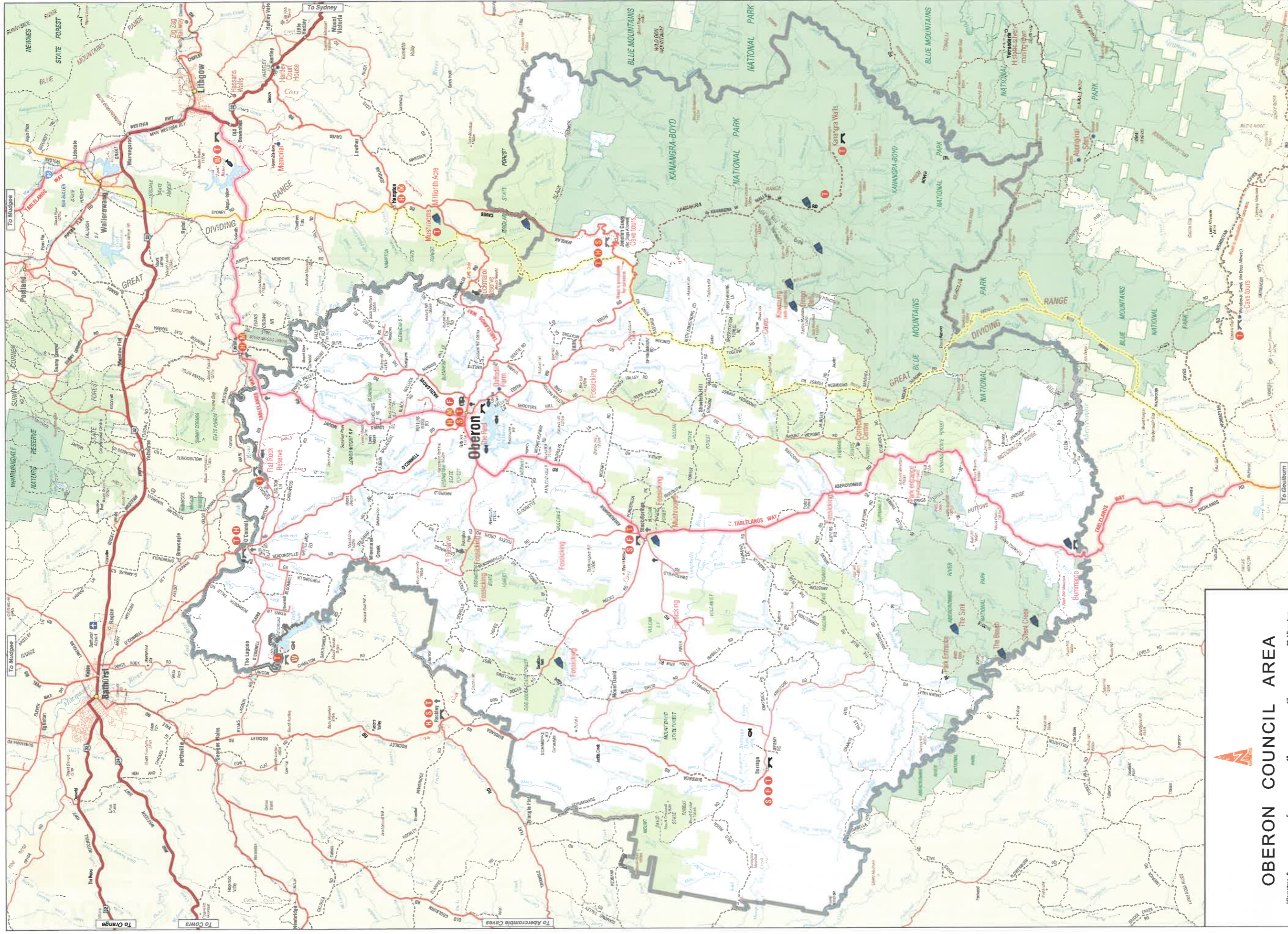


- TOILETS
- PICNIC AREA
- PLAYGROUND
- FISHING
- CHURCH/CEMETERY
- BBQ

- 1 OBERON COUNCIL
- 2 POLICE
- 3 COURTHOUSE
- 4 LIBRARY & COMMUNITY CENTRE
- 5 OBERON VISITOR INFORMATION CENTRE & CTC
- 6 NATIONAL PARKS & WILDLIFE SERVICE
- 7 COUNCIL DEPOT
- 8 STATE EMERGENCY SERVICE
- 9 FIRE CONTROL OFFICE
- 10 MEDICAL CENTRE
- 11 AMBULANCE
- 12 SWIMMING POOL (HEATED/COVERED)
- 13 TENNIS COURTS (INDOOR)
- 14 SKATE PARK & CRICKET NETS

- 15 PUBLIC SCHOOL
- 16 HIGH SCHOOL
- 17 ST JOSEPH'S PRIMARY SCHOOL
- 18 ST JOSEPH'S SECONDARY SCHOOL
- 19 BIG TROUT MOTOR INN
- 20 TITANIA MOTEL
- 21 HIGHLANDS MOTOR INN
- 22 NRMA
- 23 OBERON SMASH REPAIRS
- 24 WILLS TYRE CENTRE





OBERON COUNCIL AREA

- National Park, Nature Reserve, State Recreation Area
 - State Forest
 - Major road, National route marker, State route marker
 - Minor road sealed, unsealed
 - Foot track, Bicentennial National Trail
 - Railway
 - Town, Village
 - Locality
 - Oberon Local Government Area boundary
 - Department of Lands
- © NSW Department of Lands 2007
All Rights Reserved
www.lands.nsw.gov.au
- Disclaimer
This map has been compiled from various sources and the publisher accepts no liability for any errors or omissions therein. Whilst all data is taken to ensure a high degree of accuracy, users are advised to verify all data independently. Significant changes may have occurred since the data was originally compiled. For up to date information contact the relevant authorities.



OBERON
MORE THAN YOU IMAGINE

TOURIST FEATURES

- Locked gates } Within National Parks and Wildlife Service areas
- Camping area
- Facilities**
 - Fuel
 - Hotel
 - Motel
 - Store
 - Toilets
 - Water skiing
- Picnic area
- Fishing site
- Historic churches
- Caravan park
- Points of interest

N.B. All trails on the eastern side of KANANGRA WALLS ROAD are in wilderness and have locked gates. WALKERS ONLY.